



Reliable and profitable partnership



Official distributor  
of premium brand equipment



# CORPORATE PRESENTATION

## CONSTRUCTION EQUIPMENT



Construction and road-construction equipment.

Over 150 models of equipment.

Designed to operate in harsh climatic conditions with temperature range down to -50 °C.

## MINING EQUIPMENT



Dump trucks of rated payload up to 363 tons, excavators with maximum bucket capacity up to 42 m<sup>3</sup>, bulldozers with operating weight of up to 100 tons.

Designed to operate in extreme conditions of the Far North with temperature range down to -50 °C.

## LIFTING EQUIPMENT



Rated payload: from 200 kg to 35 tons.

Over 40 models of equipment.

Lift height: up to 30 meters.

## WAREHOUSE EQUIPMENT



Rated payload: up to 25 tons.

Environmental friendliness and energy efficiency.

Lift height: Up to 6 meters.

## FOREST EQUIPMENT



Forwarders with rated payload up to 20 tons, harvesters and forestry excavators.

Most stable for operation on slopes.

Respectful of nature.

# Official distributor of machinery and equipment



## KOMATSU

Foundation of "KOMEK", LLC. Obtaining the status of KOMATSU official distributor in the Ural Federal District



2001

## KOMATSU

KOMEK becomes official distributor of KOMATSU warehouse equipment in the Ural and Siberian Federal Districts



## KOMATSU

Expansion of KOMATSU distribution territory to the Siberian Federal District



mitsui & co.

Establishment of "KOMEK MACHINERY", LLC following the alliance between Mitsui & Co., Ltd and IKO Holding AG

2006

2010

## KOMATSU

Establishment of KOMATSU equipment rental division

## KOMATSU | Forestry Quality

KOMEK becomes official distributor of KOMATSU FOREST equipment



2012

2013



KOMEK becomes official distributor of BOMAG equipment in the Ural and Siberian Federal Districts



KOMEK becomes official dealer of Bridgestone truck tires in Russia

2015



TotalEnergies

Status of industrial distributor of TotalEnergies genuine lubricants at the territory of Russia



KOMEK becomes official distributor of Manitou telescopic handlers



2016

2018



UsedStock.ru, marketplace for sale of equipment

2020

2021

## KOMATSU | Forestry Quality

Expansion of distribution territory for KOMATSU FOREST equipment to Volga and Siberian Federal Districts



SHARE OF  
MITSUI IN KOMEK **95%**

**509** SUBSIDIARIES AND  
INVESTEES

OFFICES AND OVERSEAS  
TRADING SUBSIDIARIES  
ALL OVER THE WORLD **129**

**63** GLOBAL NETWORK  
COUNTRIES

BILLION \$  
ASSETS **122,3**

**>44 336**  
EMPLOYEES

OVER  
**75**  
YEARS  
IN THE  
MARKET

## KOMEK MACHINERY LLC BY NUMBERS

OVER **1600** ENGINES REPAIRED  
IN REBUILD CENTER

**>100** FOREST MACHINES  
SUPPORTED BY OUR  
SERVICE ENGINEERS PER YEAR

**>150** UNITS OF EQUIPMENT  
IN RENTAL FLEET

**>1000** MAINTANANCE VISITS FOR FOREST  
MACHINES PER YEAR

**>20**  
YEARS IN  
THE MARKET

**30** BRANCHES, BUSINESS  
AND REPRESENTATIVE  
OFFICES

SOLD  
**>500**  
UNITS  
OF USED  
EQUIPMENT

**2 700**  
UNITS OF EQUIPMENT UNDER  
TECHNICAL SUPPORT

**500**  
EMPLOYEES

**70%** OF OUR RENTAL  
FLEET AGE  
IS NOT MORE THAN 3 YEARS

**140**  
CORPORATE  
CARS

**>13 000**  
MAINTANANCE VISITS  
ARE MADE BY OUR  
SERVICE ENGINEERS

**>2 000** MIL.  
RUB.  
PARTS WAREHOUSES  
CAPACITY

**11** DEALERS OF WAREHOUSE  
EQUIPMENT IN URAL  
AND SIBERIA

**>250** SERVICE ENGINEERS  
AND WORKSHOP ENGINEERS

**33 100 m2**  
TOTAL AREA  
OF SERVICE & STOCKS



## 1. SELECTION OF EQUIPMENT

consulting, selection of optimum fleet for job site, calculation of fleet productivity, demo-programs, factory tours

## 2. DELIVERY

new equipment, used equipment, rental, leasing

## 3. WARRANTY AND SERVICE

warranty support, defect identification, on-site service

## 6. TRADE-IN

fleet renovation, purchased of equipment, search of buyers for equipment, auction

## 5. RENOVATION

full overhaul of equipment, overhaul repair and rebuild of complex units and components

## 4. PARTS

supply of spare parts and consumable materials





416

UNITS OF MINING  
EQUIPMENT  
UNDER TECHNICAL  
SUPPORT



89  
DOZERS

210 DUMP  
TRUCKS

HEAVY MINING  
EXCAVATORS 84

Rebuilding equipment to an operating condition with **minimum 80%** operating resource of a new machine at a local territory within the shortest time period\*.

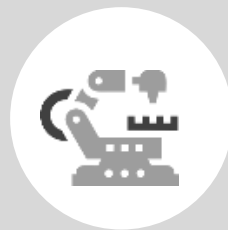
## STAGES



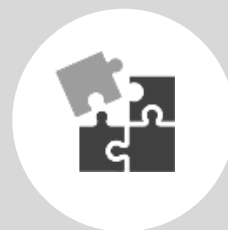
DISASSEMBLY



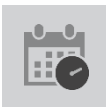
DEFECT  
IDENTIFICATION



FULL  
OVERHAUL



ASSEMBLY



Completion of work **on time**



**High quality** of the performed work



Operating resource of a component after overhaul – **minimum 80% of a new one**



Individual **warranty** conditions applicable to the operating conditions of the machine





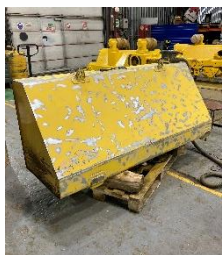
## BEFORE



## BULLDOZER AFTER OVERHAUL



## OVERHAUL PROCESS

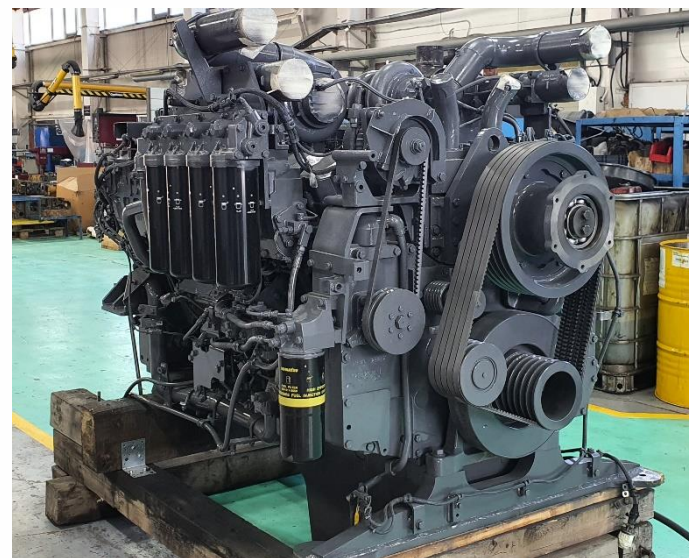




## BEFORE



## AFTER



## OVERHAUL PROCESS



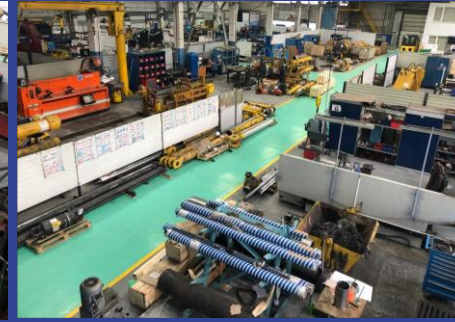


**3000m<sup>2</sup>**  
TOTAL AREA OF  
REBUILD CENTER

OVER **1600**  
ENGINES REPAIRED

OVER **20 YEARS**  
OF  
EXPERIENCE IN  
REBUILD AND REPAIR

OPERATING  
RESOURCE  
OF REPAIRED  
COMPONENT  
**MINIMUM**  
**80%**  
OF A NEW  
ONE



## REBUILD CENTER



### EQUIPMENT

mining; construction; road-construction; electro-generating equipment.



### COMPONENTS

engines; powertrains; hydraulic cylinders and other hydraulic components; ground engaging tools (GET).



### BRANDS

Komatsu; Caterpillar; Isuzu; Perkins; Cummins; Man; Mercedes, etc.



### SERVICES

Components overhaul; rebuild of basic engines; mechanical processing; engine test run; manufacture of high pressure houses; remanufacture and lining of buckets and blades.

## TECHNICAL MAINTENANCE

ALLOWS THE CUSTOMER TO SAVE MONEY ON PURCHASE OF EXPENSIVE BASIC COMPONENTS



AMC-SCHOU  
CM1800V (Denmark)



BERCO ARB 651  
(Italy)

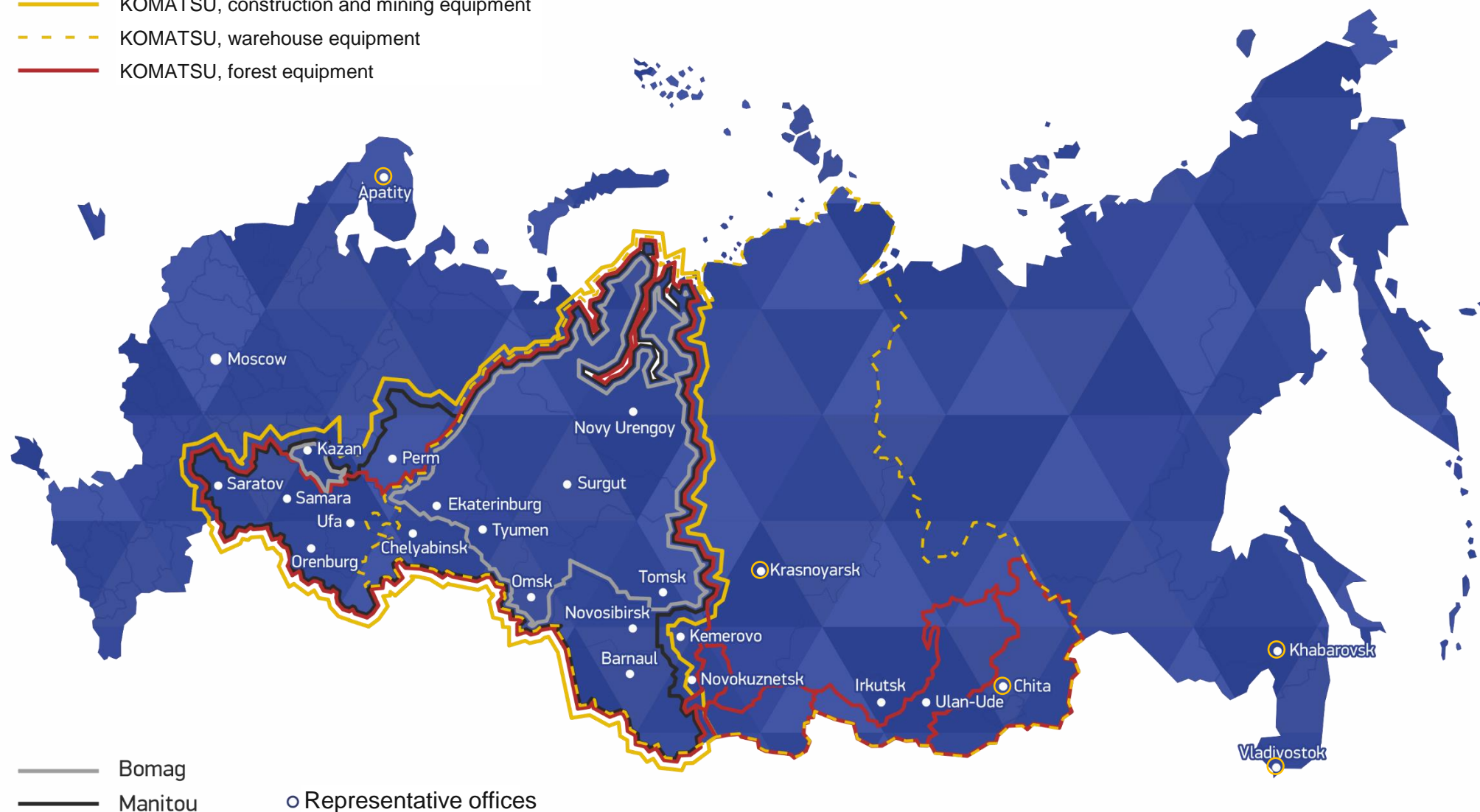


NEWEN Contour -  
BB (Italy)



ROTTLE  
F79A (USA)

- KOMATSU, construction and mining equipment
- - - KOMATSU, warehouse equipment
- KOMATSU, forest equipment





## CORPORATE CENTER

### 📍 Moscow

office 1003,  
premises 2, 3,  
Shcherbakovskaya  
St., Moscow, 105318

### 📍 Chelyabinsk

bld. B, 3,  
Tsentralnaya St.,  
Shershni,  
Chelyabinsk,  
454902

### 📍 Novosibirsk

17/1,  
Stantsionnaya St.,  
Novosibirsk,  
630096

### 📍 Samara

49B, Kirova St.,  
Samara,  
443052

### 📍 Surgut

3,  
Nizhnevartovskoye  
shosse, Surgut,  
628400

### 📍 Tomsk

1, Nikolskiy lane,  
Tomsk, 634055

### 📍 Tyumen

11, Aleksandra  
Logunova St.,  
Tyumen, 625016

### 📍 Orenburg

bld. E4, 6,  
Belyaevskaya  
St., Orenburg,  
460027

### 📍 Perm

320, shosse  
Kosmonavtov,  
Savinskoye,  
Permskiy kray,  
614513

### 📍 Kazan

53A, Gorkovskoye  
shosse, Kazan,  
420004

### 📍 Ulan-Ude

1, Lebedeva St.,  
Ulan-Ude,  
670013

### 📍 Apatity

8E, Stroiteley  
St.,  
Apatity, 184209

### 📍 Saratov

app. 1, 35,  
Millerovskaya St.,  
Saratov, 410036

### 📍 Khabarovsk

office 502, bld. A, 41,  
Vostochnoye shosse,  
Khabarovsk, 680014

### 📍 Novokuznetsk

4, Proletarskaya St.,  
Novokuznetsk,  
654045

### 📍 Ufa

22, Perspektivnaya  
St.,  
Ufa, 450030

### 📍 Severo-Eniseyskiy

bld. B, 64/3, Naberezhnaya  
St., Severo-Eniseyskiy,  
663282

### 📍 Novy Urengoy

21, Promyslovaya St.,  
Vostochnaya promzona,  
Novy Urengoy, 629300



### 📍 Ekaterinburg

42, Elizavetinskoye  
shosse, Ekaterinburg,  
620024





Reliable and profitable partnership



Official distributor  
of premium brand equipment



**Thank you!**



8 800 2000 210



[www.komek.ru](http://www.komek.ru)



[info@komek.ru](mailto:info@komek.ru)